



Niceville High School Band New Parent Meeting



Dan Wooten
Director of Bands, NHS

Doug Woodley
President, Band Boosters Association



Agenda

- Welcome
- Director's Overview
- Communication
- Band Procedures and Policies
- Band Boosters Association

www.nicevilleband.com



Welcome to the Niceville High School Band





Performing





Band Boosters





Director's Overview



Director Dan Wooten



Meet the Directors



Dan Wooten, Director of Bands



Jeff Adams, Associate Director of Bands



Matt Tenore, Associate Director of Bands



NHS Eagle Pride Over 50 Years of Excellence

“The NHS Band program has but one mission...to create educated consumers of music and well-adjusted citizens through participation in band.”



NHS Eagle Pride Over 50 Years of Excellence

***66% of all medical school applicants
who have their undergraduate
degree in MUSIC are ACCEPTED
into medical school***

***This is higher than accepted math
and biology applicants combined!***



NHS Eagle Pride Over 50 Years of Excellence

Michigan State University's Law School claims that "students with undergraduate degrees in music are better at time management, public speaking, studying, and...are overall more successful in their first year Law Brief Writing classes."



**NHS Eagle Pride
Over 50 Years of Excellence**

***“Band Takes Too
Much Time”***



NHS Eagle Pride Over 50 Years of Excellence

***2003: 2,400 students enrolled at NHS.
225 in the band***

***2016: 2,000 students enrolled at NHS
310 in the band***

***School's enrollment decreased 17%
Band enrollment increased 7%.***

***Our highest achievement – we have created an
environment of retention and growth!***



NHS Eagle Pride Over 50 Years of Excellence

Our program has a national reputation for performances of the highest level.

However, it is our belief that that our highest achievement lies in the greater than 98% yearly retention rate in our enrollment.



Communications

About 300 students in our program this year. There are 14 coaches for 65 players on the football team. There are three of us!

We have the work in our department divided for the highest level of efficiency possible.



Communications

Basic “Chain of Command” in the Band Office

Wooten

Budget
Curriculum
Community Relations
Honors Credit
Wind Ensemble
Percussion

Tenore

Attendance
Absence Requests
Admin Support
Community Relations
Eagle Pride Support

TBA

Absence Requests
Color Guard/Majorettes
Symphonic Winds
Jazz



Communications

No paper handouts!

- Class Announcements to Students
- Information posted on board or doors
- Band website (nicevilleband.com)
- Facebook, Instagram
- Remind app (@nhseagpr)
- Emails via Charms



Communications

- General Questions: questions@nhseaglepride.com
- Email from the links in Charms
- Call for the Directors for student specific concerns
- Band Room number is 833-4261



Who Makes Up the “Eagle Pride”?

Eagle Pride Marching Band

Wind Instruments

- Wind Ensemble (aka “1st Band”)
- Symphonic Winds (aka “Second Band”)
- Concert Band (aka “Third Band”)

Drum Line / Percussion

- Battery (snares, quads, bass drums, cymbals)
- The Pit (mallets, keyboard, guitars)

Auxiliaries

- Color Guard (Flags)
- Majorettes (Twirlers)



Typical Travel

- Marching Band – Football Season
 - Travel to most out of town football games
 - Full band typically travels within the district
 - Pep Band typically travels outside the district
- Big Marching Band trip every 4 years, e.g., Rose Parade
- Concert Band and other ensembles
 - Travel varies depending on opportunities
 - Troy Alabama, MPA, etc



Attendance Policy

- Attendance at practices and performances is **mandatory!**
- Any student who misses ***any portion*** of a rehearsal is subject to replacement for an indeterminate length of time if a qualified alternate is available
- ***Notify the director in writing at least 4 weeks in advance for marching band and 8 weeks in advance for concert band*** of the time you want your request to be considered.
- ***“Considered” does not necessarily mean granted.***



Excused Absence Criteria

- 1) Personal illness
- 2) Death of a relative
- 3) Observance of a religious holiday
- 4) College Visits – *ONLY* for ***rehearsals (not performances)*** IF prior arrangements have been made with the Director.
- 5) Emergency circumstances which, in the judgment of the band director, constitute good and sufficient cause for absence from band.

WORK IS NOT a valid excuse to miss school therefore it is invalid for missing rehearsals or performances.



Absence Request

A written **ABSENCE REQUEST** is required **in advance** of an *absence*, a *tardy*, or an *early dismissal*.

A completed and signed ABSENCE REQUEST FORM is required to be turned in:

- 4 weeks in advance for *marching* band
- 8 weeks in advance for *concert* band.

Absence Request Forms are Located:

- In the wall files outside the Band Office
- Online at www.nicevilleband.com



Alternate Policy

- Any excused absence from a rehearsal/performance will result in being placed on alternate status for a minimum of one additional week's performance.
- Any unexcused absence from a **rehearsal/performance** will result in being placed on alternate status for one additional week'.
- Note: if you are sick, you should not attend a rehearsal or performance just to "keep your spot." We do factor types of excused absences into the speed of your return to performing status.
- Alternates will shadow another performer during all practices.



Alternate Shadows vs Shared A/B Pairs

- Unfortunately in the “heat of battle” (aka marching season) we use the term “shadows” interchangeably. This can create inadvertent messages.
- There is a **HUGE** difference between a shadow that is an alternate and a “shadow” that is a shared pair.
- Shared pairs are equal performers in the spot
 - Typically we either alternate weeks or split each show’s performance time.
- Alternates are NOT potential performers until their alternate status has been removed.



Why Have Shared A/B Pairs?

- Impossible to anticipate enrollment changes over the summer OR to predict attendance issues.
- As a result, we write the show for less performers than we have on paper.
- This means that we always start the season with shared pairs. (All sports teams have a “bench!”)
- Majority of the group is not in a shared pair but, most shared pairs start out as freshmen.
- Do not be concerned if your student starts the season in a shared pair. **ALL STUDENTS WILL PERFORM DURING THE COURSE OF THE SEASON!**



Band Grading Policy

It is expected that members of any performing ensemble in the Department of Bands will attend **every** rehearsal and performance in its **entirety**.

Each student will start the 1st quarter with 100 points. The following is a breakdown of point deductions for each infraction:

- Unexcused absence from practice.....12 pts
- Unexcused absence from performance..... 32 pts
- Tardy to practice..... 3 pts
- Tardy to performance6 pts
- Unprepared for rehearsal 5 pts
(i.e., no instrument, music, flip folder, drill coordinates, etc.)



Band Boosters Association



Band Boosters President Doug Woodley



2020-2021 Executive Board and Chairpersons

Executive Board of Directors	
President	Doug Woodley
Vice President	Jimmy Carter
Ways & Means	Samantha Zaydman
Treasurer	Claire Erk
Student Accounting	Lisa Fleischman
Head Chaperone	Kim Hodges
Volunteer Coordinator	Deb Olson
Secretary	Stephanie Merz

Key Chairpersons				
Equipment	Jesse Barefield		Uniforms	Andra Welde
Concessions	Danielle Duque		Charms	Lisa Rackley
Publicity	Doug Woodley			



Band Boosters Association

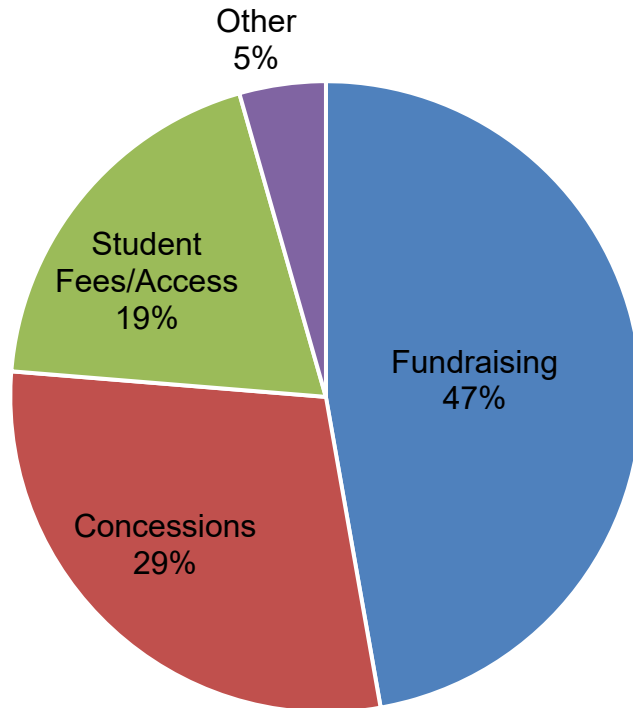
- Purpose
 - Support the Band Director's vision
 - Manage the non-student band business for the directors
 - Interface to the band parents for non-student issues
 - Fun
- Membership
 - All parents are automatically members
 - Boosters meet first Monday of every month at 5:30-6:30
 - Location usually NHS band room

Next Meeting is June 7

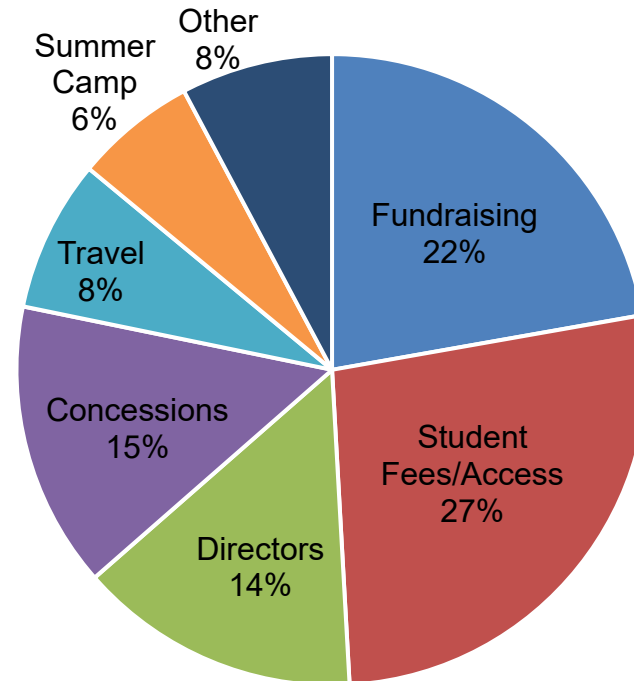


Typical Budget

Income



Expenses





Student Fundraising

Event	Timeframe
Citrus	Fall
Worlds Finest Chocolate Bar Sales	Fall/Spring
Restaurant Spirit Nights	Throughout Year
Band on the Run 5k	Spring
Super 50/50	Spring

- The band general account typically receives a portion of all fundraisers
- Fundraisers increase significantly during big trip years (e.g. Rose Parade)
- Designed to offset student fees and expenses



Volunteer Opportunities

Activity	Comments
Concessions	~ 50 people per home game
Chaperone	Band rehearsals, games and trips
Equipment crew	First to arrive, last to leave
Fundraising chair	Several volunteer opportunities
Uniforms	Uniform maintenance and upkeep

- Recommend every parent/guardian work concessions at least 1 game
- All volunteering requires online OCSD Volunteer Affidavit
- Sign up to volunteer on Charms
- No long-term commitments
- Need shadows for next year
 - Equipment, Ways and Means, Vice President et.al.



Charms



[Silent Auction](#) [Directors/Subs Only](#) [*Virtual Band*](#) [About](#) [Charms](#) [Calendar](#) [Contact Us](#) [Directors](#) [FAQs](#)
[Forms & Files](#) [Google Classroom](#) [Auditions/Tryouts](#) [Smugmug Photos](#) [Rosters](#) [White Sheets](#)



[New/Future Students](#)



**The Official Website of the Niceville
High School Eagle Pride Band.**

www.nicevilleband.com



Charms

EXIT CHARMS

1 NEWS ITEM!

✓ BY USING THIS PRODUCT YOU AGREE THAT YOUR USE OF OUR WEBSITE AND ANY SERVICES ARE SUBJECT TO OUR [TERMS OF USE](#) AND [PRIVACY STATEMENT](#)

Student Area Password: **(Case Sensitive!)**

Enter

Show Hint

If this is the first time you have logged in to Charms, your password is your ID number.

Trip Chaperone Password:

Enter

Non-Parent Volunteer ID:

Enter



Public Calendar



Email Staff



Handouts & Files



Website

News!



NHS EAGLE PRIDE - SECTION PICTURE DAY THIS SATURDAY

7/29/2019



Charms

Sunday	Monday	Tuesday	Wednesday	Thursday	Friday	Saturday
						1
2	3 3:00 PM - 5:00 PM Flag Tryout Clinic - Times TBA Q 5:30 PM - 6:30 PM Band Booster Meeting Q	4 3:00 PM - 5:00 PM Flag Tryout Clinic Q	5 3:00 PM - 5:00 PM Flag Tryout Clinic Q	6 3:00 PM - 5:00 PM Flag Tryout Clinic Q	7 3:00 PM - 5:00 PM Flag Tryout Clinic Q	8
9	10 5:30 PM - 6:00 PM Flag/Majorette Parent Meeting [All New and Returning Members] R 6:00 PM - 7:30 PM New Student/Parent Orientation R	11	12	13	14	15 8:00 AM - 12:00 PM Rookie Welcome Day R
16	17 2:00 PM Drum Major Tryouts (Tentative) Q	18	19 2:30 PM - 4:30 PM New Student Sight Reading Auditions Last Name = A-L 1st Come/1st Served R	20 2:30 PM - 4:30 PM New Student Sight Reading Auditions Lastname=M-Z 1st Come/1st Served R	21	22
23 3:00 PM Spring Concert & Senior Awards (Click to see description) R	24 7:00 PM Spring Concert (Click to see description) R	25	26	27	28 3:00 PM - 5:30 PM Drumline Tryouts R	29 9:00 AM - 4:00 PM Drumline Tryouts R
30	31 MEMORIAL DAY					



Charms

- HOME
- CALENDAR
- VOLUNTEERS ▼
- EMAIL DIRECTORS
- FILES & HANDOUTS

EXIT CHARMS

1 NEWS ITE

Volunteer Opportunities - August 22, 2019 ▼

Enter Student Password

EVENT: EAGLE PRIDE REHEARSAL

START TIME: 6:00 PM END TIME: 8:00 PM

LOCATION: EAGLE PRIDE FIELD

DETAILS: LDR 062419

Please enter your name, email address and phone to signup for one of the needs listed below. Contact information will be hidden once you sign-up - only your name will be visible to other volunteers.

Volunteer Need	Name	Cell Phone	E-mail	
Bank Gate 5:30-8:30	<input type="text"/>	<input type="text"/>	<input type="text"/>	Sign Up
Bank Gate 5:30-8:30	<input type="text"/>	<input type="text"/>	<input type="text"/>	Sign Up
Crosswalk Chaperones 5:30-8:30	Jacki Adams			
Crosswalk Chaperones 5:30-8:30	Angela Marshall			
Equipment Gate 5:30-8:30	<input type="text"/>	<input type="text"/>	<input type="text"/>	Sign Up
Equipment Gate 5:30-8:30	<input type="text"/>	<input type="text"/>	<input type="text"/>	Sign Up



Dates to Remember

Date	Time	Event
May 15	See Charms	Rookie Day
May 19/20	See Charms	New Student Sight Reading Auditions
May 23	3:00	Concert and Senior Awards Night (MKAC)
May 24	7:00	Concert (MKAC)
May 28/29	See Charms	Drumline Tryouts
June 1	2:00	Jazz 1 Auditions
June 7	5:30	Band Booster Meeting
July 12 – 16	8:30 – 4:00	Percussion Camp
July 19 – 22	5:00-9:00	Eagle Pride Pre-Camp
July 26 – 30	See Charms	Eagle Pride Band Camp

Monitor Calendar on Website



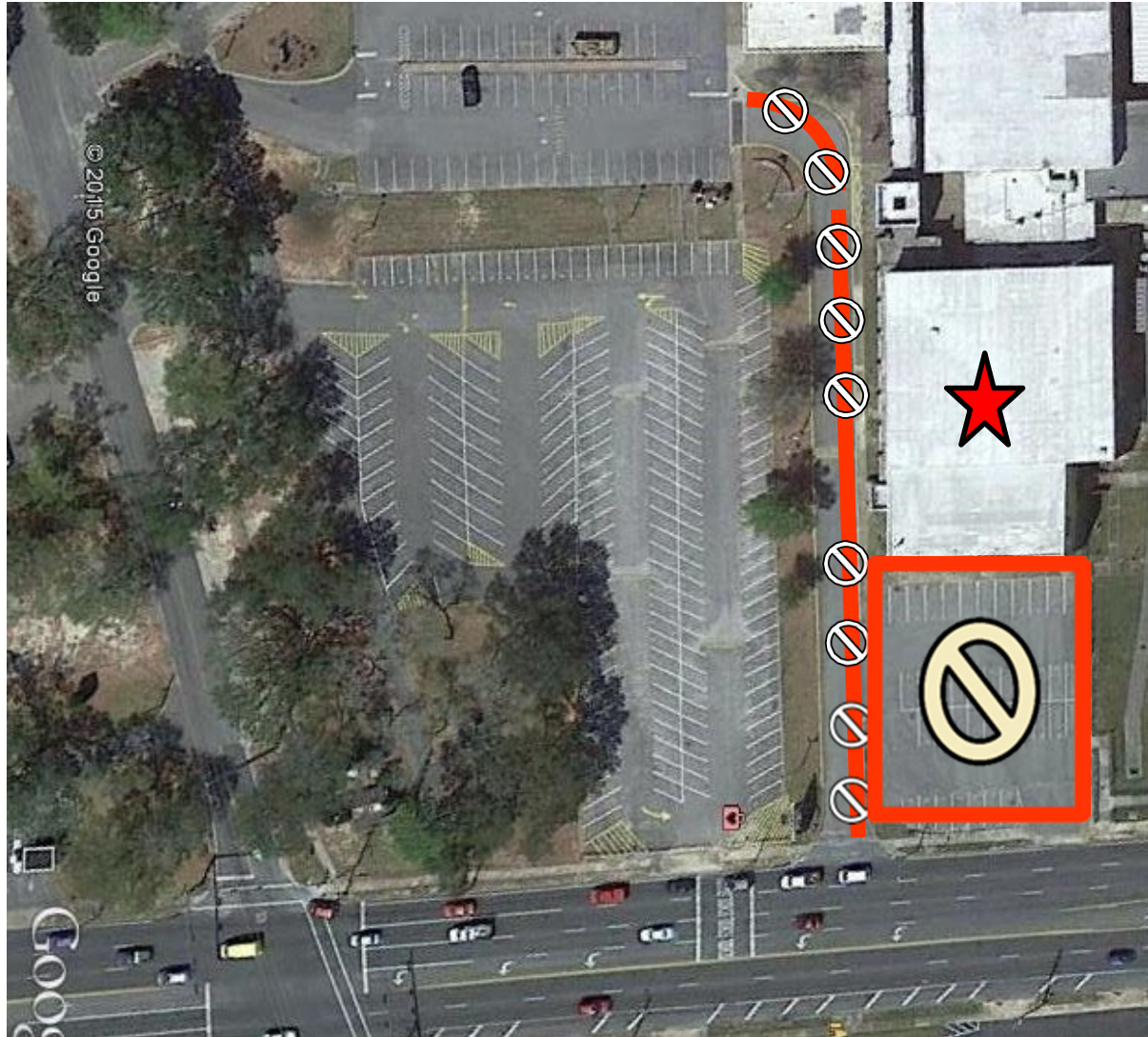
Director's Overview



Associate Director Matt Tenore

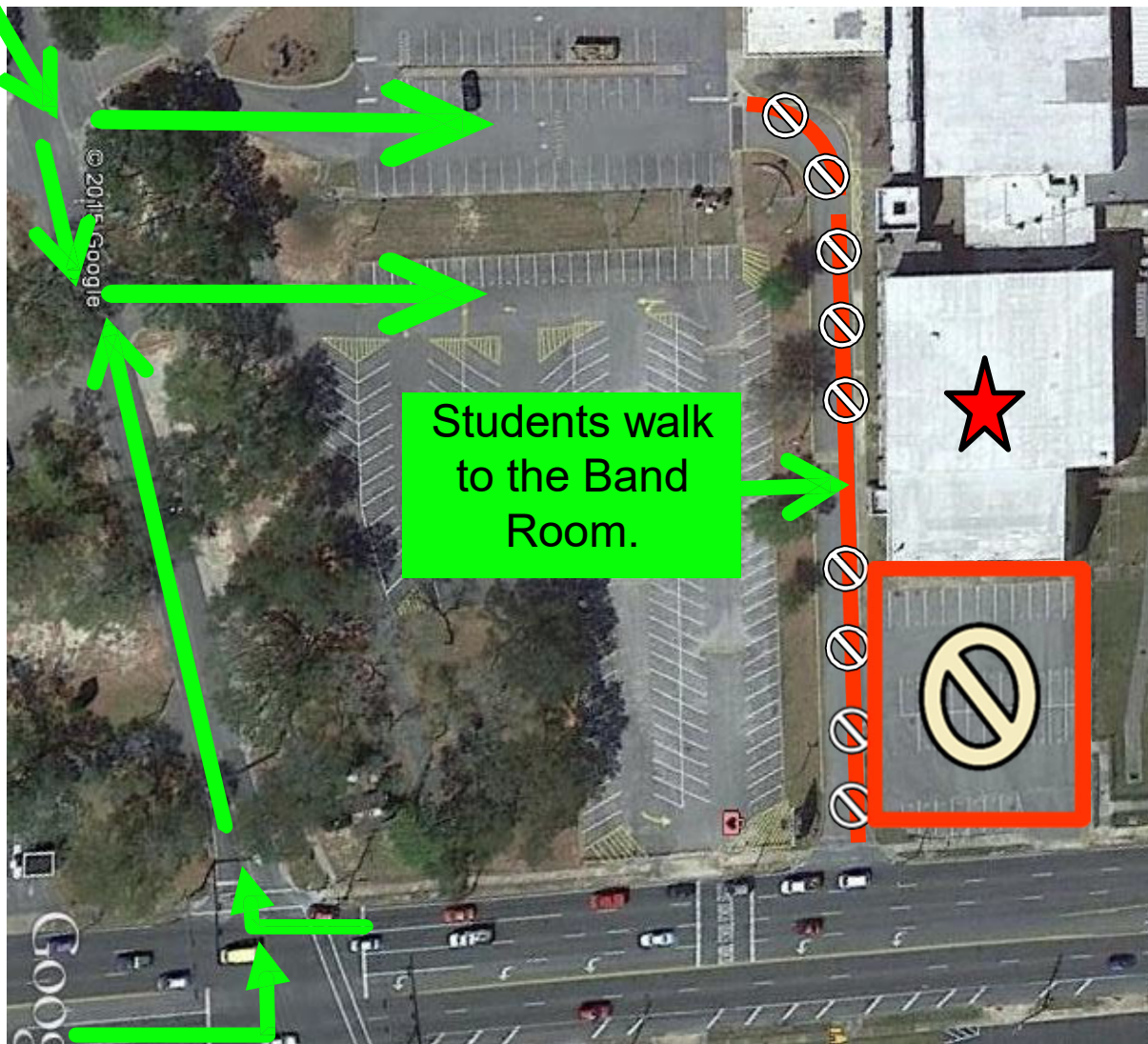


Band Room Drop-Off & Pick-Up





Band Room Drop-Off & Pick-Up





“Our Practice Field Challenge”



Band Room



NHS

Palm Boulevard

John Sims Parkway

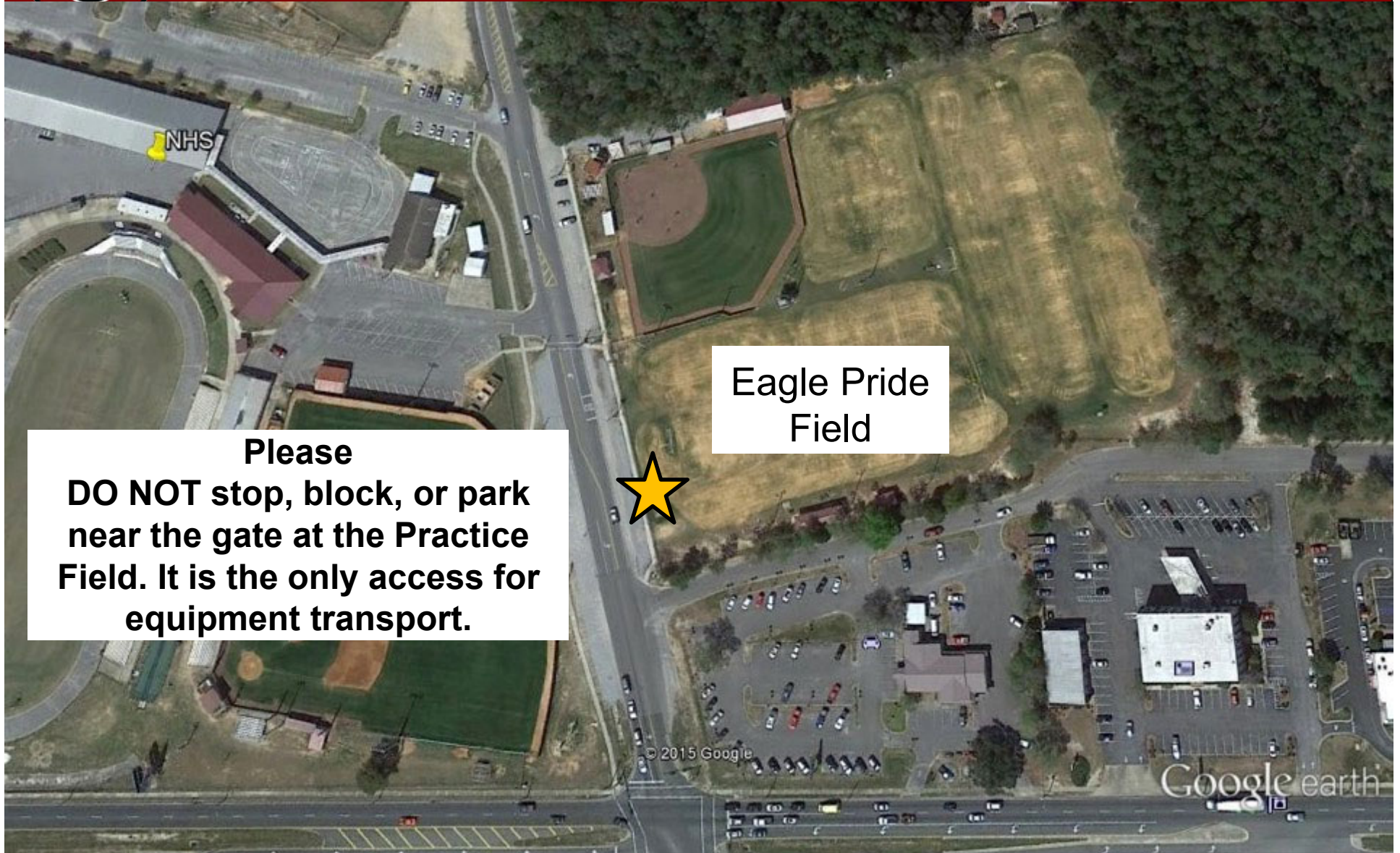
Eagle Pride Field

© 2015 Google

Google earth



Eagle Pride Field



NHS

Eagle Pride
Field

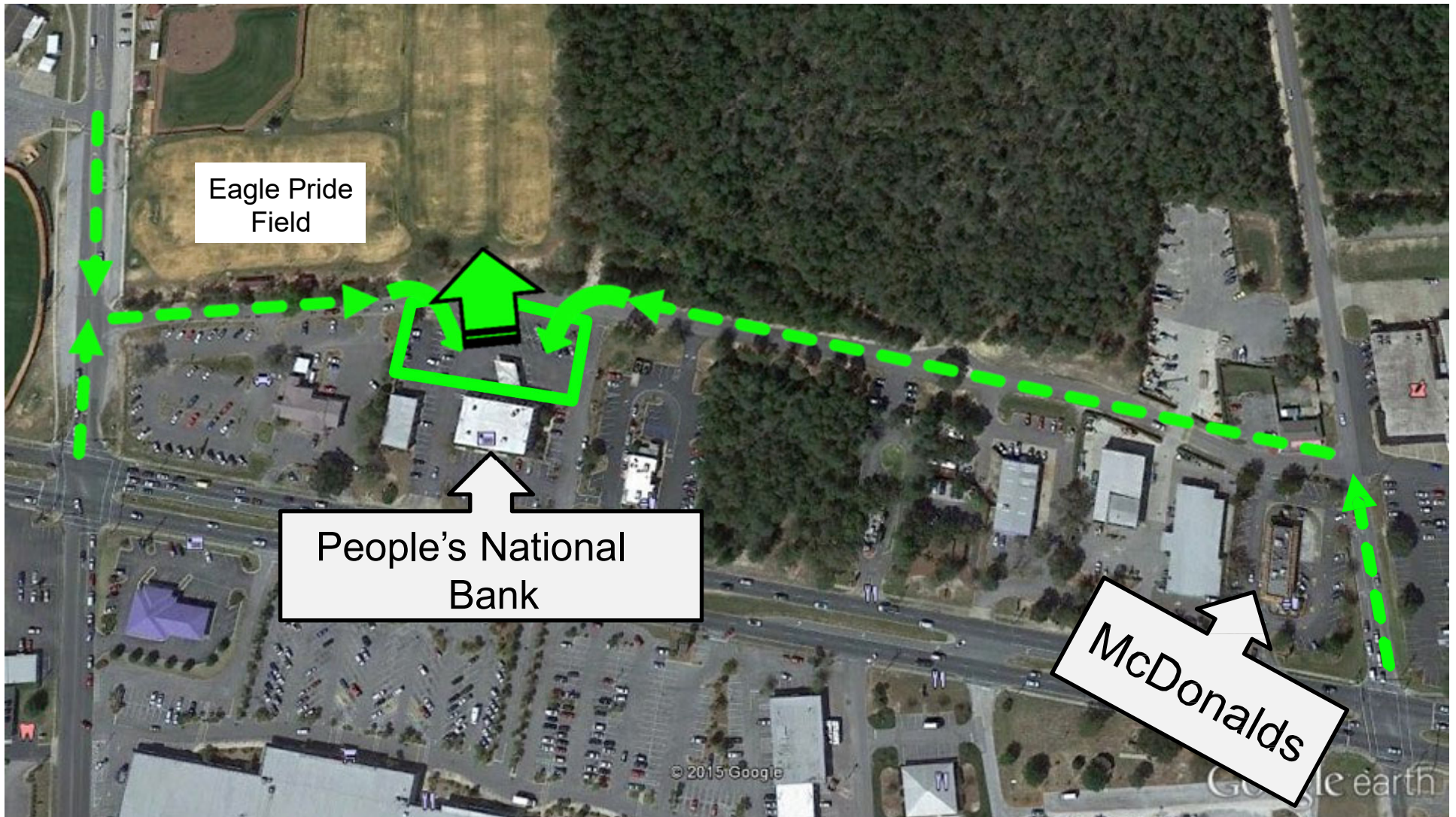
**Please
DO NOT stop, block, or park
near the gate at the Practice
Field. It is the only access for
equipment transport.**

© 2015 Google

Google earth



“Parent Taxi” Drop-Off





Agenda

Closing Comments

www.nicevilleband.com



Questions?

